



# 156TH STREET PROJECT

PROJECT INFORMATION  
SEPTEMBER 2020

## CONSTRUCTION UPDATE

The southern portion of 156th Street from the Papio Creek Bridge to Warehouse Street is tentatively scheduled to be completed **this Friday, September 25** and reopened to local traffic. The 156th Street project Facebook page will provide notification when the road has reopened and barricades are removed. When open, local traffic can use N 2nd Street, Molley Street and Warehouse Street to access 156th Street and proceed south instead of using Highway 36 and 168th Street.

Once this section of roadway is open, the contractor will begin working their way north on 156th Street and will close the Bennington Road/156th Street intersection **this Friday, September 25**. Bennington Middle and High School traffic should use Molley Street to Warehouse Street and 156th Street then take Military Road and 168th Street to access the campuses.


An updated phasing and detour map with an associated schedule are shown to the right. Please note these dates and time frames are subject to change due to weather impacts or other unforeseen delays.

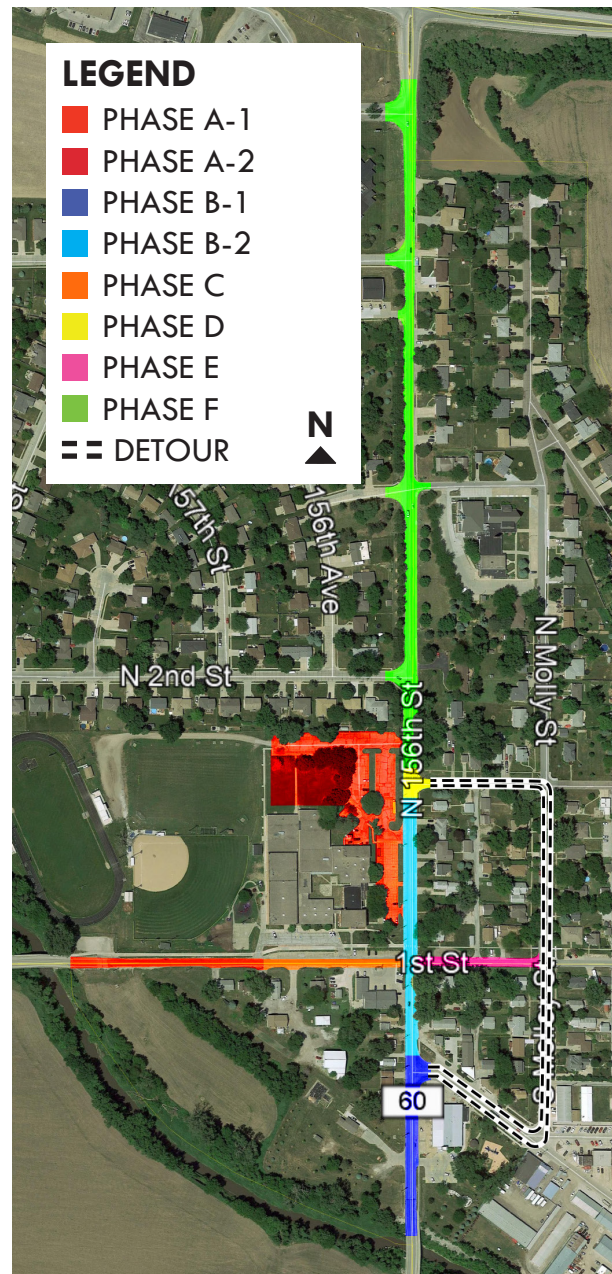
For any questions or concerns, please contact the project contacts or visit the project's Facebook page listed below.

## PROJECT CONTACTS

**Marvin Lech, NDOT District 2, Construction Engineer**  
402-595-2534  
marvin.lech@nebraska.gov

**Jeff Webert, K2 Construction, Project Manager**  
402-467-2355 / 402-890-2299  
jwebert@k2construction.biz

 A Facebook group has been set up for the project. Please see the following for information:  
[facebook.com/groups/K2BenningtonProject/](https://facebook.com/groups/K2BenningtonProject/)



## PHASES A-1 & A-2

### PHASE C

**Completed and open to school/  
local traffic**

Area: Bennington Rd —  
Papio Creek Bridge to 156th St

### PHASE B-1

**Schedule: Open to local traffic on  
9/25/20**

Area: 156th St — Papio Creek Bridge to  
Warehouse St

**Remaining Work:** Sidewalks and  
seeding

### PHASE B-2

**Schedule: 8/11/20 to 10/23/20**

**Closure:** 156th St — North of  
Warehouse St to south of  
N 2nd St/Bennington Elem.  
School driveway

**Detour:** Military Rd/ 168th St/  
Highway 36

### PHASE D

**Schedule: TBD**

**Closure:** Intersection of N 2nd St/  
Bennington Elem. School  
driveway with 156th St

**Detour:** Military Rd/ 168th St/  
Highway 36

## ALL OTHER PHASES (E-F)

Schedule and order of work to be  
determined pending completion of other  
phases.