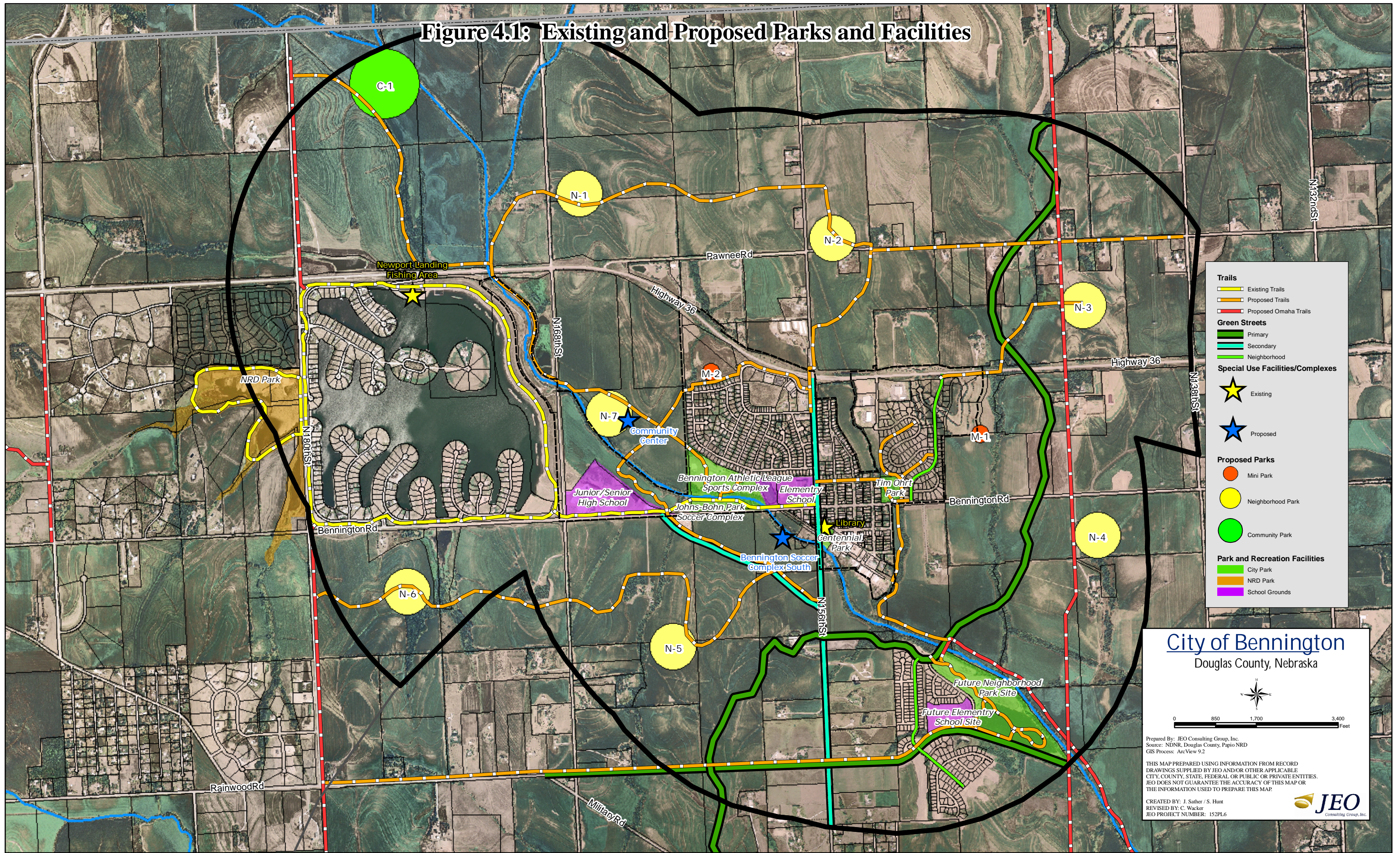


Figure 4.1: Existing and Proposed Parks and Facilities



City of Bennington
Douglas County, Nebraska



0 850 1,700 3,400 Feet

Prepared By: JEO Consulting Group, Inc.
Source: NDNr, Douglas County, Papio NRD
GIS Process: ArcView 9.2

THIS MAP PREPARED USING INFORMATION FROM RECORD DRAWINGS SUPPLIED BY JEO AND/OR OTHER APPLICABLE CITY, COUNTY, STATE, FEDERAL OR PUBLIC OR PRIVATE ENTITIES. JEO DOES NOT GUARANTEE THE ACCURACY OF THIS MAP OR THE INFORMATION USED TO PREPARE THIS MAP.

CREATED BY: J. Sather / S. Hunt
REVISED BY: C. Wacker
JEO PROJECT NUMBER: 152PL6

